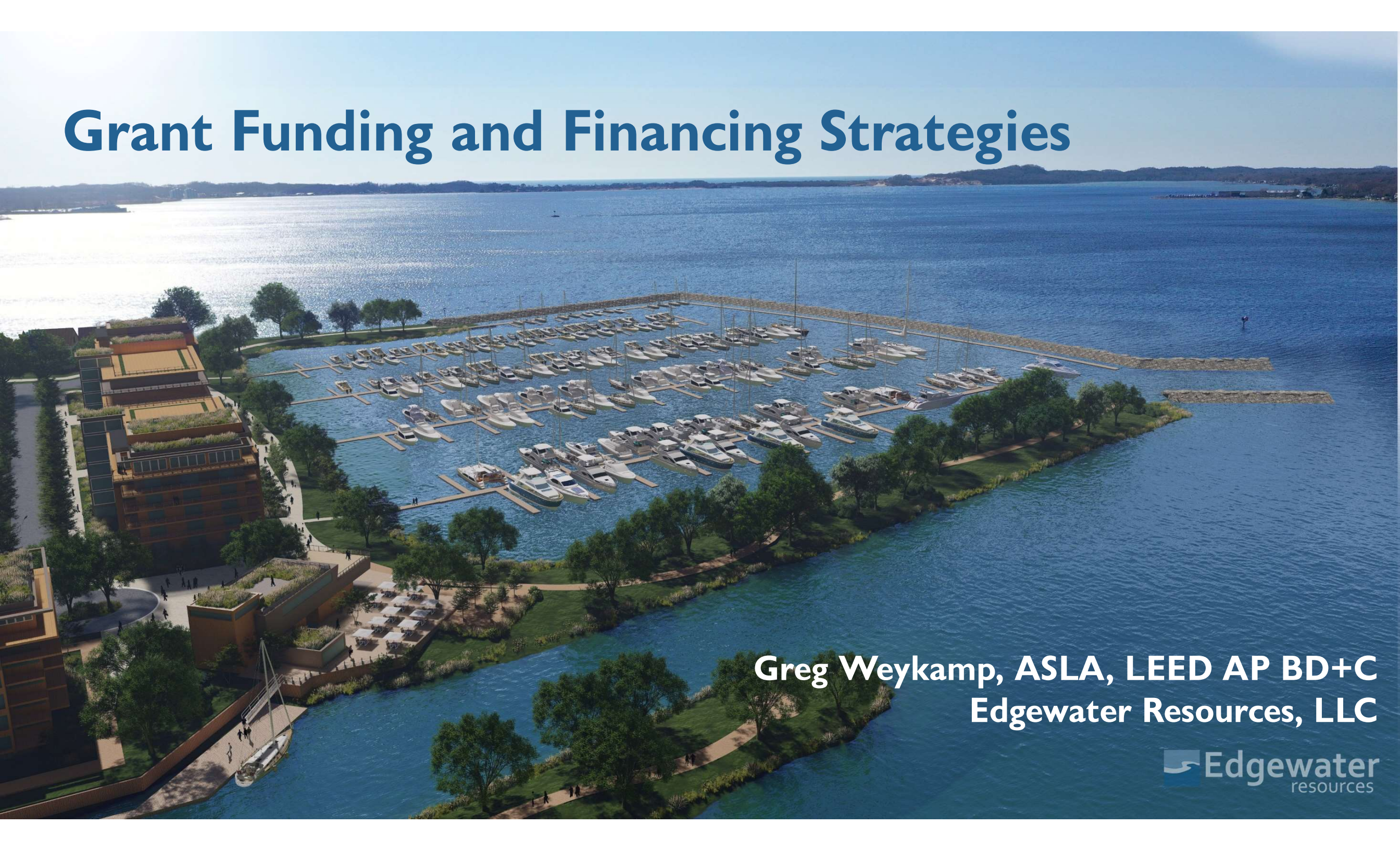


Grant Funding and Financing Strategies



Greg Weykamp, ASLA, LEED AP BD+C
Edgewater Resources, LLC



OVERVIEW

Grant Programs

Local Funding &
Development
Strategies

Public Private
Partnerships

Tax Credits



FEDERAL GRANTS

USFWS Boating Infrastructure Grant

Clean Vessel Act

FEMA Building Resilient Infrastructure and Communities

FEMA Flood Mitigation Assistance

HUD CDBG Disaster Recovery Program

National Marine Fisheries / Wildlife

National Fish and Wildlife Fund

US FISH and WILDLIFE SERVICE BOATING INFRASTRUCTURE GRANT TIER I and TIER II

Funds Transient Boating Infrastructure Only, 26' or Longer

Open to Public or Private Entities

Tier I Funds Up to \$150k, For Design, Planning, and Engineering

Tier II Funds up to \$1.5m, For Engineering and Construction

Distributed Through State Agencies

Supplement with Clean Vessel Act Funds



PORT OF ROCHESTER NEW YORK



NAVY PIER MARINA

EAST TAWAS STATE HARBOR





FEMA BUILDING RESILIENT INFRASTRUCTURE IN COMMUNITIES

STATE GRANTS

Waterways Program Funding

Economic Development Funding

Varies State by State

HARRISVILLE HARBOR



TEXAS STATE GRANTS

Gulf of Mexico Economic Security Act
Coastal Erosion Planning and Response Act
Coastal Conservation (CCA)
Texas General Land Office
Economic Development Funding

SOUTH PADRE ISLAND



NEW YORK STATE GRANTS

Local Waterfront Revitalization Program

Downtown Redevelopment Initiative (DRI)

Governors Office of Storm Recovery

State Development Capital Funds

Environmental Protection Fund

HAMBURG NEW YORK



HAMBURG NEW YORK

SEPTEMBER 13, 2021 | Albany, NY

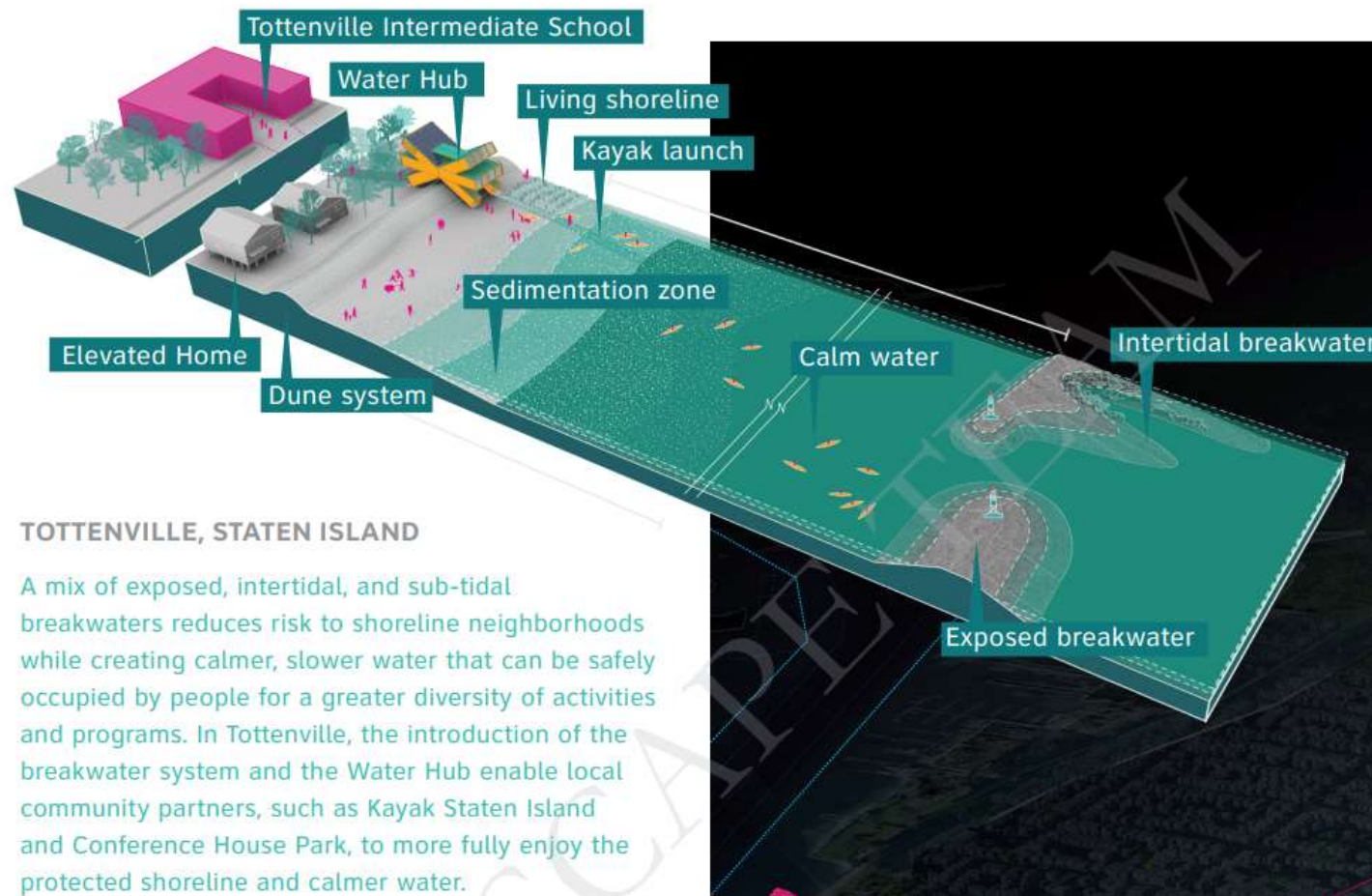
Governor Hochul Announces Start of Construction on \$107 Million Living Breakwaters Project Off-shore of Staten Island

SUPERSTORM SANDY

STORM RECOVERY

PUBLIC SAFETY

SHARE



WAUKEGAN PORT DISTRICT

Lake
Michigan

Waukegan River

Waukegan Harbor

E Sea Horse Dr

Pershing Rd

Grand Ave

Clayton St

E Madison St

Clayton St

Legend	
A. Water-Dependent Industrial	M. Bar/Restaurant
B. Cruise Ship Birthing	N. Mixed-Use Commercial
C. Hotel/Condo/Restaurant/ Conference	O. ADA Kayak Launch/ Jr. Sailing Foundation
D. Hotel/Condo Expansion	P. Kayak Storage
E. Parking Garage	Q. Bay Marine
F. Residential	R. Parking Garage Over Boat Storage
G. Mixed-Use Residential	S. Lake Michigan Research and Education Center
H. Yacht Club	T. New Harbor and Marina Offices
I. Park Amenity	U. 20' Wide Waterfront Promenade
J. Festival Event Lawn	V. Regional Trail Connection
K. Water Taxi	W. Pedestrian Connection to Downtown
L. Charter Fishing	X. Future Development



REBUILD ILLINOIS



LOCAL FUNDING & DEVELOPMENT PARTNERSHIPS

Land Contribution

Tax Rebates

TIF Tax Increment Financing

Local Investors

Why? Economic Impacts to Community

LOCAL ECONOMIC IMPACTS

Summary Economic Impacts

Impact Type	Employment (Jobs)	Industry Output	Value Added (GDP)	Labor Income
Direct	5	\$898,240	\$360,704	\$126,799
Indirect	4	\$787,003	\$386,436	\$232,184
Induced	10	\$1,726,924	\$1,002,086	\$623,164
Total Impact	18	\$3,175,013	\$1,814,329	\$881,051

- Industry output represents sales revenues. Employment represents fulltime and part-time jobs.
- Industry output represents sales revenues.
- Employment represents fulltime and part-time jobs.
- Value added is equivalent to Gross Domestic Product (GDP) and represents labor income, other property income and business taxes.
- See the table below for a detailed listing of local/state and federal tax impacts.
- Note that these economic measures are independent and should not be added together

LOCAL ECONOMIC IMPACTS



PUBLIC PRIVATE PARTNERSHIPS

Private Sector Collaborates with Public Sector

Public Sector Provides Funding Support for Non Revenue Generating Elements

Private Sector Provides Funding for Revenue Generating Elements

Requires Flexibility and Collaboration

TAX INCREMENT FINANCING

Funds Shared for Public Infrastructure Through Capturing Value of Private Investment

Community Funds Infrastructure That Supports Increase in Taxable Values

Funds Repaid Through New Taxes Generated By Private Investment

RENARD ISLAND WISCONSIN



DOUGLAS WATERFRONT



BROWNFIELD TIF FUNDING

Due Care Activities

Asbestos, Lead Paint, and Mold Abatement

Select Building and Site Demolition

Site Preparation

Public Infrastructure Improvements

ADELAIDE POINTE



ADELAIDE POINTE FUNDING

\$125 Million Project

\$1.5 Million BIG Grant

\$45 Million Brownfield TIF to
City and Developer

\$1 Million State of Michigan
Infrastructure Support



ADELAIDE POINTE



ADELAIDE POINTE





ADELAIDE POINTE



INFLATION REDUCTION ACT

30% Tax Credit:

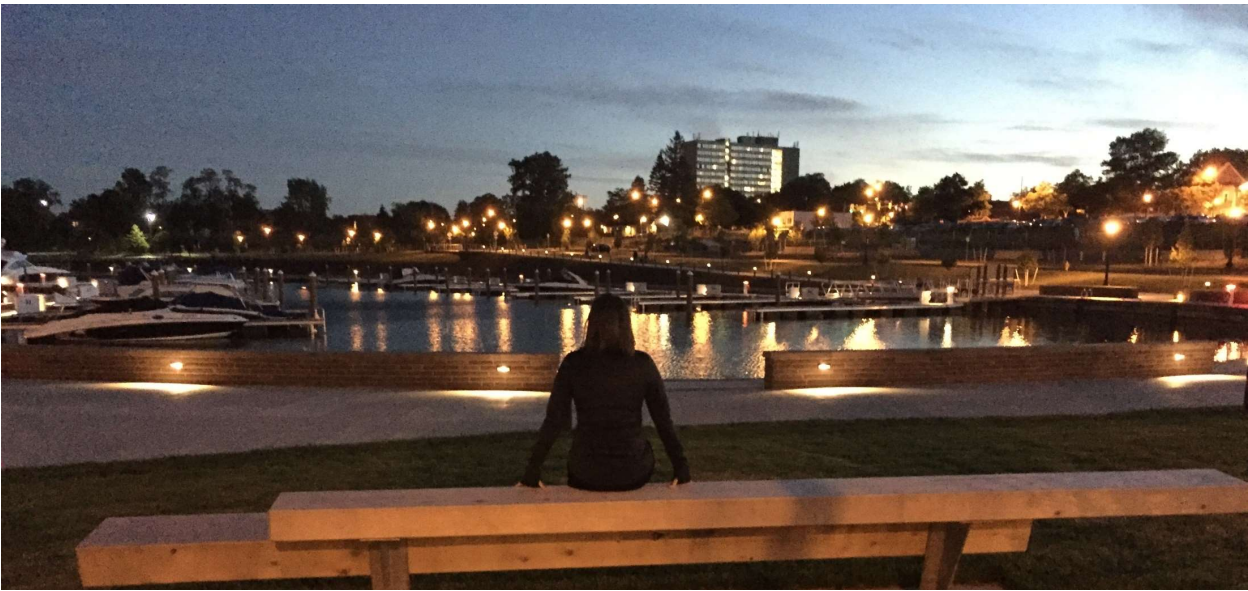
Solar Panels

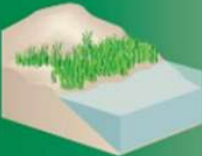
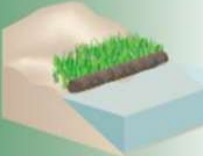
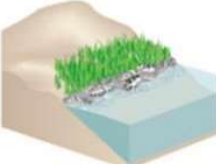

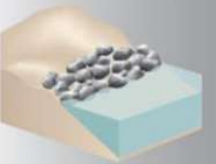
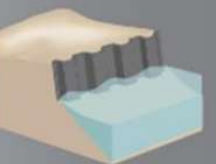
Labor Costs for Installation, Permitting Fees,
Inspection Costs, and Developer Fees

All Solar Equipment, Inverters, Wiring, and Mounting
Hardware

Energy Storage Systems Rated Three Kilowatt-Hours
(kWh) or Greater (starting in 2023)





GREEN - SOFTER TECHNIQUES			GRAY - HARDER TECHNIQUES		
<i>Living Shorelines</i>			<i>Coastal Structures</i>		
 <p>VEGETATION ONLY - Provides a buffer to upland areas and breaks small waves. Suitable for low wave energy environments.</p>	 <p>EDGING - Added structure holds the toe of existing or vegetated slope in place. Suitable for most areas except high wave energy environments.</p>	 <p>SILLS - Parallel to vegetated shoreline, reduces wave energy, and prevents erosion. Suitable for most areas except high wave energy environments.</p>	 <p>BREAKWATER - (vegetation optional) - Offshore structures intended to break waves, reducing the force of wave action, and encourage sediment accretion. Suitable for most areas.</p>	 <p>REVETMENT - Lays over the slope of the shoreline and protects it from erosion and waves. Suitable for sites with existing hardened shoreline structures.</p>	 <p>BULKHEAD - Vertical wall parallel to the shoreline intended to hold soil in place. Suitable for high energy settings and sites with existing hard shoreline structures.</p>



DECEMBER 21, 2021

Tritium partners with Aqua superPower to expand charging network for electric boats

Scooter Doll - Dec. 21st 2021 9:01 pm PT □ @SCOOTERDOLL



SUMMARY

Consider All
Potential Sources

Leverage
Partnerships

Focus on the Value
You Provide





Greg Weykamp, ASLA, LEED AP BD+C
gweykamp@edgewaterresources.com
269 408 6562

